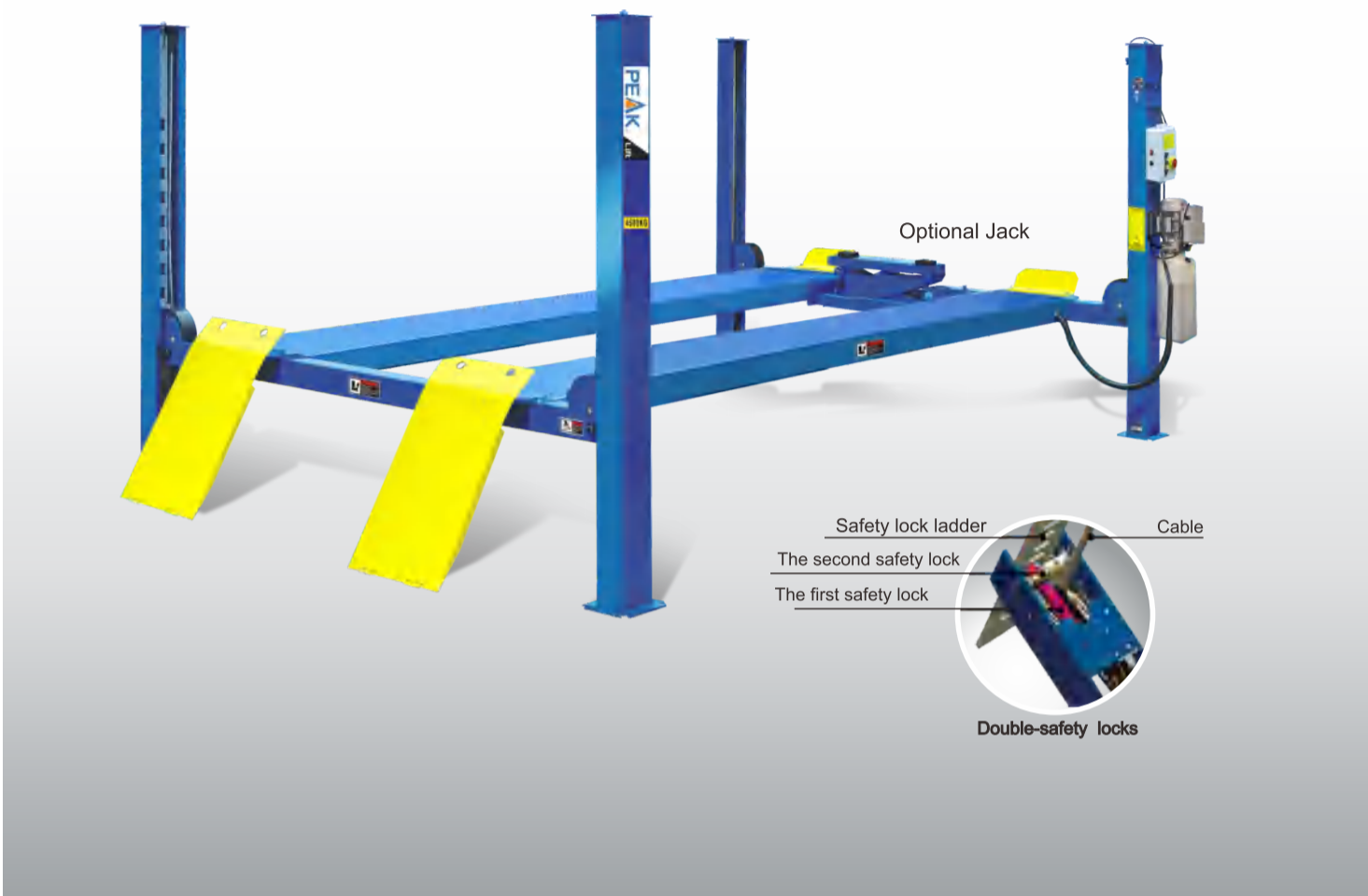
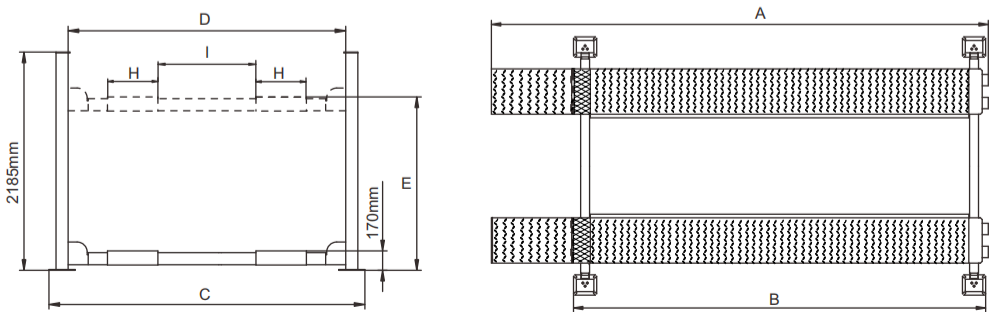


MODEL 409 410 412
Non-Alignment Four-post Lift



FEATURES

- Electric-air control operation system.
- Mechanical self-lock and air-driven safety release.
- Electrical hydraulic power system, cable-driven.
- Non-skid diamond platform.
- Adjustable platform and adjustable safety lock ladders.
- Dual safety device: In case the primary safety locks are out of operation, the lift would also be locked automatically by a second safety device.
- Optional Jack.

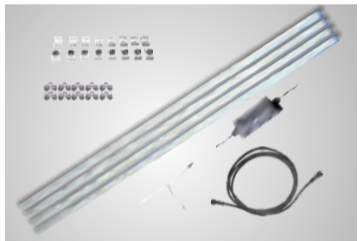


EXCLUSIVE FEATURE !

Electric control device With **UP**, **LOCK** and **DOWN** buttons
With C.E. stop switch at 300 mm from ground and alarm tone when lowering down from 300 mm to ground make the lift more safety.



Oil-water separator and Solenoid air valve are installed on the power side column.



The 4-post LED Light kits is fitted for every model of PEAK 4-post lifts .
Kits No.:40102002



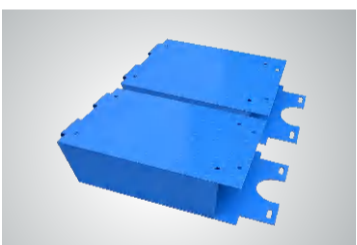
Optional Rolling Jacks

J6H: manual hydraulic type 2.8 T
J6A: pneumatic hydraulic type 2.8 T
RJ - 8A: pneumatic hydraulic type 3.5 T



Optional Air Line Kits
All peak four post lifts are designed to use the air line kits for rolling jack.

Kits No.:40102



Optional platform extension kits add an extra 660mm(26") length to the platform.

Kits No.:40903(409 410)
Kits No.:41203(412)

SPECIFICATIONS

Model	Lifting Capacity	Lifting Time	A	B	C	D	E	H	I	Gross Weight	Motor
			Overall Length (Inc. Ramps)	Overall Length (No Ramps)	Overall Width	Width Between Columns	Lifting Height	Runway width	Width Between Runway		
409	4.0T (9,000 lbs.)	45 Seconds	5512mm (217")	4600mm (181 1/8")	3208mm (126 1/4")	2852mm (112 1/4")	1865mm (73 1/2")	508mm (20")	Max.1300mm (51 1/4")	917kg (2,021lbs)	3.0HP
410	4.5T (10,000lbs)	45 Seconds	5910mm (232 5/8")	4998mm (196 3/4")	3356mm (132 1/8")	3000mm (118 1/8")	1865mm (73 1/2")	508mm (20")	Max.1365mm (53 3/4")	1065kg (2,348lbs)	3.0HP
412	5.5T (12,000 lbs.)	63 Seconds	6012mm (236 5/8")	5100mm (200 3/4")	3208mm (126 1/4")	2852mm (112 1/4")	1865mm (73 1/2")	508mm (20")	Max.1300mm (51 1/4")	1070kg (2,359lbs)	4.0HP