

MODEL 209SAC 209SACH

Clearfloor Direct-driven Two-post Lift

<http://www.peaklift.cn>

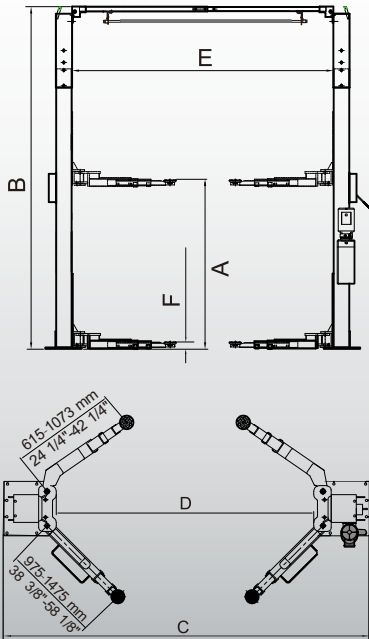
MODEL 209SAC 209SACH

Clearfloor Direct-driven Two-post Lift



209SAC and 209SACH are the advance two post lifts with high setting by extension columns.

209SACH is higher than 209SAC using higher extension columns.

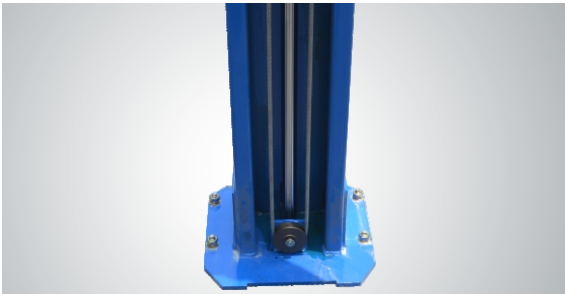


ADVANCE LINE OF TWO POST LIFTS

Model 209SAC,209SACH is our another one of advance line two post lif...Clear floor, more flexible with and high adjustment, advance features.



▲ Single-Point Safety Release
The Single-point safety release makes it easy for the operator to unlock both columns locks from one column, and more reliable !



▲ Hydraulic Direct-driven Cylinders
The hydraulic direct-driven cylinders feature more efficient,more longevity, more reliable and less service.



▲ Super Asymmetric arms allow to put the arms asymmetric or symmetric configuration.
Only 209SAC 209SACH



▲ The stackable rubber pads assembly with 1.5", 2.5",5" extension adapters



▲ Optional Width Extension Kits
With these kits the width between posts is adjusted from 2850mm to 3000mm.
Kits No.:20906 (209SAC)
Kits No.:20907 (209SACH)



▲ Exclusive Feature
Optional Hight Extension Kits
with these kits the overall height is adjusted from 3821mm(150 1/2''') to 4431mm(174 1/2').
only 209SAC,Kits No.:20902

FEATURES

- 4000kg (9,000lbs) capacity.
- Dual hydraulic direct-driven cylinders made on high standard.
- Super Asymmetric arms allow to load different vehicles in an asymmetric or symmetric configuration.
- Aero cable used for synchronization.
- Single-point safety release, allow technican to disengage both column simultaneously.
- Self-lubricating UHMW Polyethylene sliders and bronze bush.
- Clear-floor design, provide unobstructed floor use.
- Overhead safety shut-off device prevents vehicle damage.
- Stackable rubber pads and 1.5",2.5",5"adapters as standard supply.
- Standard adjustable heights accommodates varying ceiling heights.
- Standard door guards.
- Standard toe guards on lifting arms.

SPECIFICATIONS

Model	Style	Lifting Capacity	Lifting Time	A	B	C	D	E	F	Gross Weight	Motor
				Lifting Height	Overall Height	Overall Width	Drive-Thru Clearance	Width Between Columns	Minimum Pad Height		
209SAC	Clearfloor Direct-driven	4.0T (9,000 lbs.)	57 Seconds	1815-2044mm (71 1/2" - 80 1/2")	3621/3821mm (142 1/2"/150 1/2")	3428mm (135")	2528mm (99 1/2")	2850mm (112 1/4")	90mm (3 1/2")	687kg (1,515lbs)	3.0HP
209SACH	Clearfloor Direct-driven	4.0T (9,000 lbs.)	57 Seconds	1815-2044mm (71 1/2" - 80 1/2")	4231/4431mm (166 1/2"/174 1/2")	3428mm (135")	2528mm (99 1/2")	2850mm (112 1/4")	90mm (3 1/2")	720kg (1,587lbs)	3.0HP