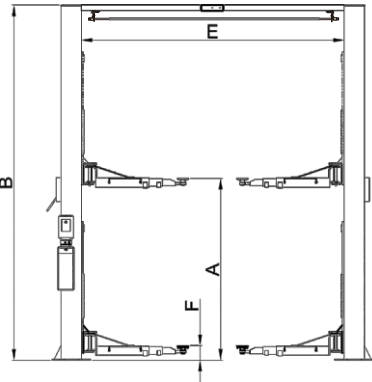
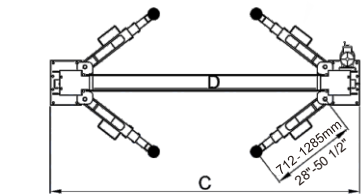




FEATURES

- 4500kg (10,000 lbs) Capacity.
- Dual hydraulic cylinders,designed and made on high standard,high quality oil seals.
- Aero cable used for synchronization.
- Self-lubricating UHMW Polyethylene sliders and bronze bush.
- Single-point safety release, and dual safety design.
- Clearfloor design, provide unobstructed floor space.
- Overhead safety shut-off device.
- 4 three-stages arms are suitable for more vehicles.
- Automatic arms restraints.
- Stackable adapters 1.5", 2.5", 5" as standard.

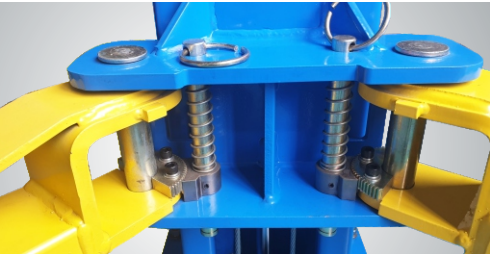


PROFESSIONAL LINE OF TWO POST LIFTS

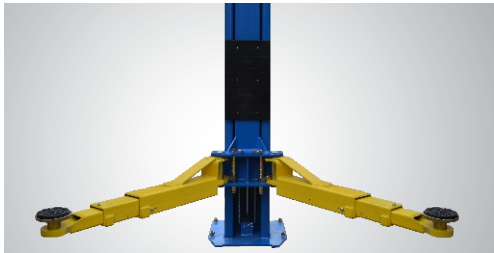
How to make a perfect products ? It is our dream and goal day by day, year by year... With extremely long carriages, direct- driven hydraulic system, strong and simplified design, PEAK professional line two post lifts model 210C are expected to be more longevity, more reliable and less service.



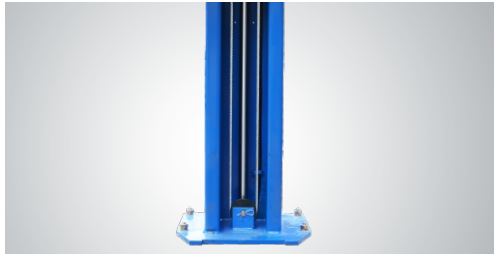
Single Point Lock Release Lever . This Lever Release Locking Mechanisms In Both Columns From One Column



Automatic arm restraints.



EXCLUSIVE FEATURE !
4 three-stages arms are suitable for more vehicles.



Hydraulic Direct-driven Cylinder



The stackable rubber pads assembly with 1.5", 2.5", 5" extension adapters



Optional 24V LED lights for clear floor 2-post lifts:
Kits 20101 plus extension cable 20103.

SPECIFICATIONS

Model	Style	Lifting Capacity	Lifting Time	A	B	C	D	E	F	Gross Weight	Motor
				Lifting Height	Overall Height	Overall Width	Drive-Thru Clearance	Width Between Columns	Minimum Pad Height		
210C	Clearfloor Direct-driven	4.5 T (10,000 lbs.)	61 Seconds	1890-2119mm (74 3/8"-83 3/8")	3854mm (151 3/4")	3516mm (138 3/8")	2560mm (100 3/4")	2850mm (112 1/4")	90mm (3 1/2")	756kg (1,667lbs)	3.0HP