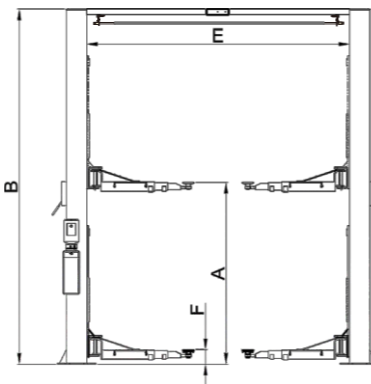
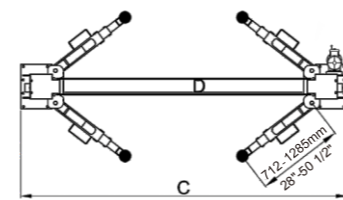


**The Extremely Wide Model 210CX !**



**FEATURES**

- 4500kg (10,000 lbs) Capacity.
- Dual hydraulic cylinders, designed and made on high standard, high quality oil seals.
- Aero cable used for synchronization.
- Self-lubricating UHMW Polyethylene sliders and bronze bush.
- Single-point safety release, and dual safety design.
- Clearfloor design, provide unobstructed floor space.
- Overhead safety shut-off device.
- 4 three-stages arms are suitable for more vehicles.
- Automatic arms restraints.
- Stackable adapters 1.5", 2.5", 5" as standard.



**PROFESSIONAL LINE OF TWO POST LIFTS**

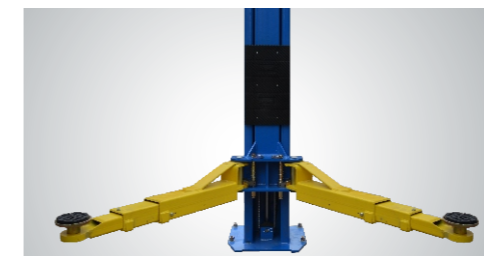
How to make a perfect products ? It is our dream and goal day by day, year by year... With extremely long carriages, direct-driven hydraulic system, strong and simplified design, PEAK professional line two post lifts model 210CX are expected to be more longevity, more reliable and less service.



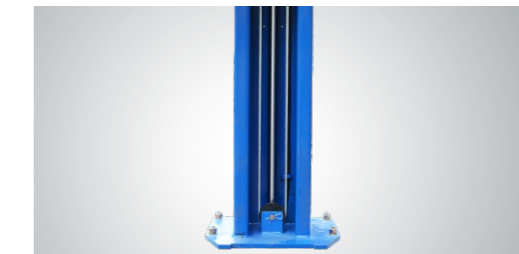
▲ Single Point Lock Release Lever . This Lever Release Locking Mechanisms In Both Columns From One Column



▲ Automatic arm restraints.



▲ **EXCLUSIVE FEATURE !**  
4 three-stages arms are suitable for more vehicles.



▲ Hydraulic Direct-driven Cylinder



▲ The stackable rubber pads assembly with 1.5", 2.5", 5" extension adapters



▲ Optional 24V LED lights for clear floor 2-post lifts:  
Kits 20101 plus extension cable 20103.

**SPECIFICATIONS**

Model	Style	Lifting Capacity	Lifting Time	A	B	C	D	E	F	Gross Weight	Motor
				Lifting Height	Overall Height	Overall Width	Drive-Thru Clearance	Width Between Columns	Minimum Pad Height		
210CX	Clearfloor Direct-driven	4.5 T (10,000 lbs.)	61 Seconds	1890-2119mm (74 3/8"-83 3/8")	3854mm (151 3/4")	3676mm (144 3/4")	2720mm (107 1/8")	3010mm (118 1/2")	90mm (3 1/2")	763kg (1,682lbs)	3.0HP