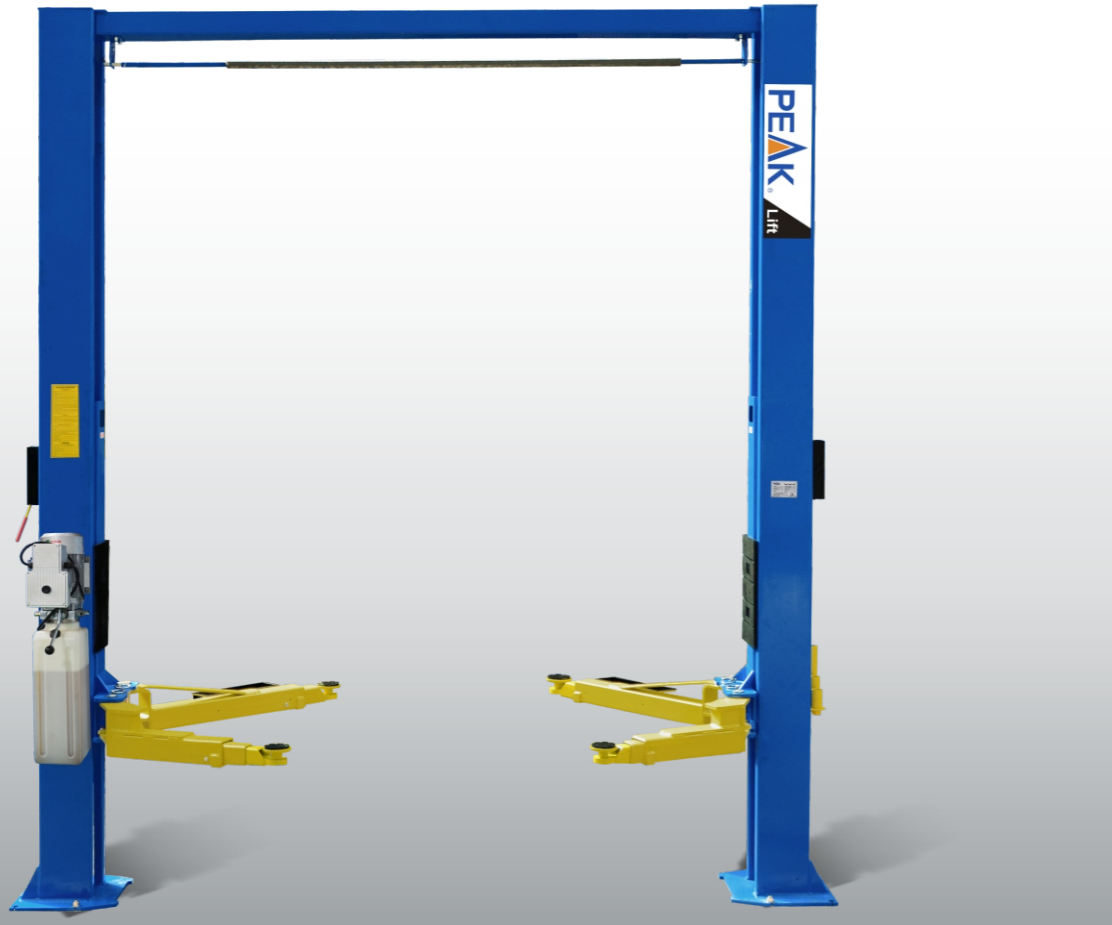
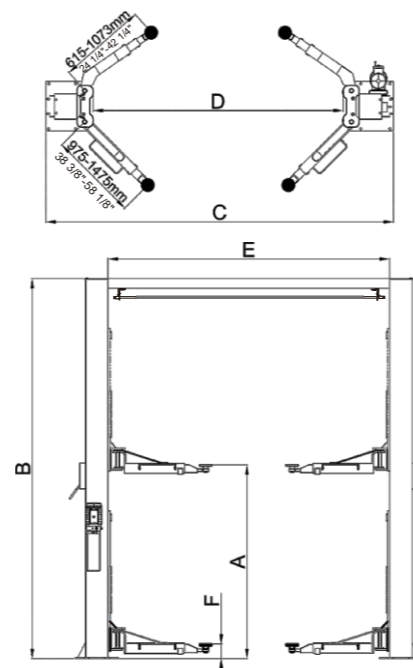


Our Super asymmetric lift 210SAC share the same advantages of our professional line of two post lifts plus asymmetric design feature.



## FEATURES

- 4500kg (10,000 lbs) Capacity.
- Dual hydraulic direct-driven cylinders, designed and made on high standard, high quality seals.
- Super Asymmetric arms allow to load different vehicles in an asymmetric or symmetric configuration.
- Aero cable used for synchronization.
- Self-lubricating UHMW Polyethylene sliders and bronze bush.
- Single-point safety release.
- Clearfloor design, provide unobstructed floor space.
- Overhead safety shut-off device.
- Automatic arms restraints.
- Stackable adapters 1.5", 2.5", 5" as standard.



## PROFESSIONAL LINE OF TWO POST LIFTS

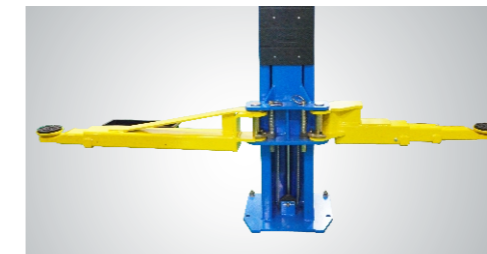
How to make a perfect products ? It is our dream and goal day by day, year by year... With extremely long carriages, direct-driven hydraulic system, strong and simplified design, PEAK professional line two post lifts model 210SAC are expected to be more longevity, more reliable and less service.



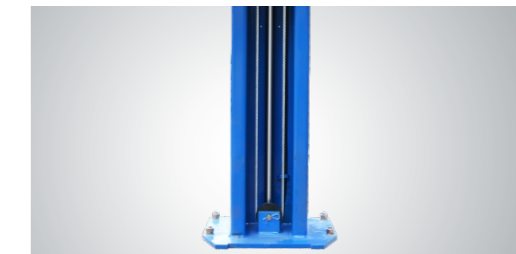
▲ Single Point Lock Release Lever . This Lever Release Locking Mechanisms In Both Columns From One Column



▲ Automatic arm restraints.



▲ Super Asymmetric arms allow to load different Vehicles in an asymmetric or symmetric configuration. only 210SAC



▲ Hydraulic Direct-driven Cylinder



▲ The stackable rubber pads assembly with 1.5", 2.5", 5" extension adapters



▲ Optional 24V LED lights for clear floor 2-post lifts:  
Kits 20101 plus extension cable 20103.

## SPECIFICATIONS

Model	Style	Lifting Capacity	Lifting Time	A	B	C	D	E	F	Gross Weight	Motor
				Lifting Height	Overall Height	Overall Width	Drive-Thru Clearance	Width Between Columns	Minimum Pad Height		
210SAC	Clearfloor Direct-driven	4.5 T (10,000 lbs.)	61 Seconds	1890-2119mm (74 3/8"-83 3/8")	3854mm (151 3/4")	3516mm (138 3/8")	2560mm (100 3/4")	2850mm (112 1/4")	90mm (3 1/2")	769kg (1,695lbs)	3.0HP