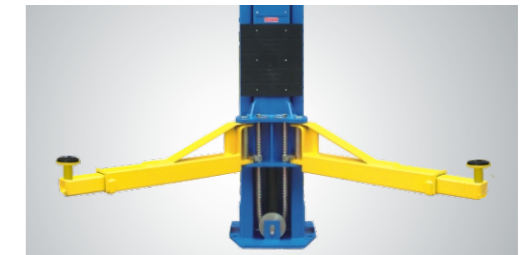


**HEAVY-DUTY LINE OF TWO POST LIFTS**

Peak heavy-duty line of two post lifts model 215C are specially designed for vehicle from car to truck, with heavy-duty steel construction.



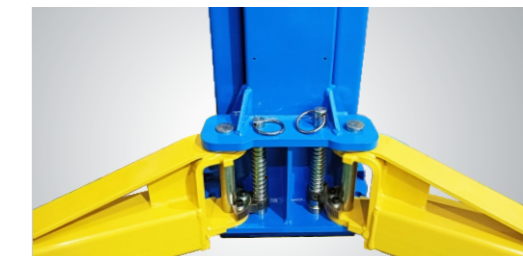
▲ **Single-point Safety Release**  
The release lever (next to the power unit ) is pulled down to release the locks on both columns from one column. It is more efficient, more reliable, and safer than the dual safety release



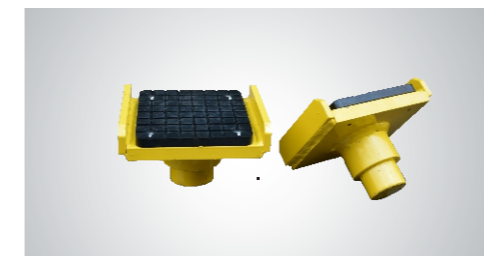
▲ **EXCLUSIVE FEATURE !**  
The 215C with 4 two-stages arms are allow to load more heavy-duty vehicles.



▲ The stackable rubber pads assembly with 1.5", 2.5", 5" extension adapters.



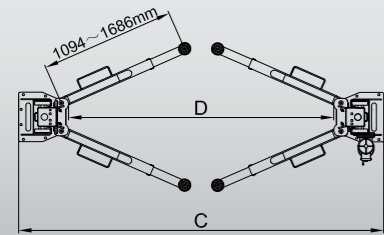
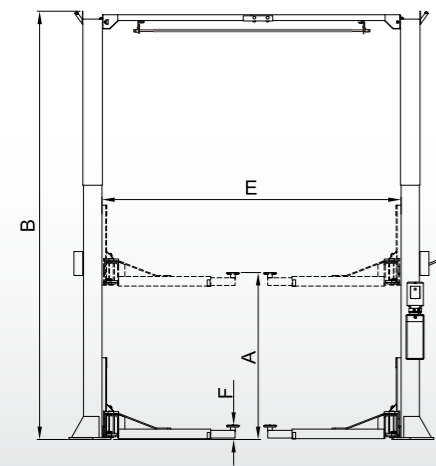
▲ Automatic arm restraints.



▲ The Optional Saddle adapter.  
Kits No. for light truck:20802  
Kits No. for heavy-duty truck:21103



▲ Optional 24V LED lights for clear floor 2-post lift  
Kits 20101 plus extension cable 20103.



**FEATURES**

- 6800kg (15,000 Lbs) Capacity.
- Dual hydraulic direct-driven cylinders,designed and made on high standard,high quality seals for cylinder.
- 4 two-stage arms are allow to load more heavy-duty vehicles.
- Aero cable used for synchronization.
- Self-lubricating UHMW Polyethylene sliders and bronze bush.
- Single-point safety release.
- Clearfloor design, provide unobstructed floor space.
- Overhead safety shut-off device.
- Adjustable height setting accommodate varying service ceiling heights.
- Automatic arms restraints.



▲ The Optional Base Plate Kits No.21501, Including extension frames , and 14 pcs of our standard Anchor Bolts

**SPECIFICATIONS**

Model	Style	Lifting Capacity	Lifting Time	A	B	C	D	E	F	Gross Weight	Motor
				Lifting Height	Overall Height	Overall Width	Drive-Thru Clearance	Width Between Columns	Minimum Pad Height		
215C	Clearfloor Direct-driven	6.8 T (15,000 lbs.)	84 Seconds	1912/2141mm (75 1/2"/ 84 1/2")	4420/5029mm (174"/ 198")	3829mm (150 3/4")	2787mm (109 3/4")	3137mm (123 1/2")	185mm (7 1/8")	1167kg (2,572lbs)	4.0 HP