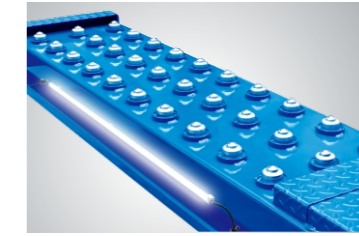


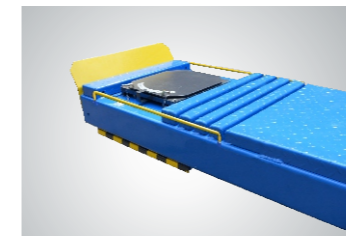
PEAK Scissors lifts, the same as PEAK other lifts, adhere to the principle of safety, durability, convenience and best performance. By the strict control of design, material-selection, manufacturing and examination, assure PEAK Scissors lifts offer you the best quality.



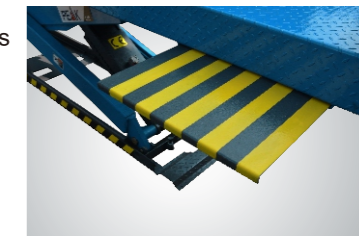
◀ Electro-air Safety Device



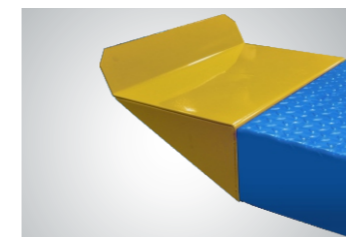
◀ New rear-slip ball sets
Optional LED Lights provide extra and efficient lighting for underneath the vehicle.
Kits No.: PX010



◀ Adjustable template blocks to fit various wheel bases vehicles.



◀ Service shelf for more effective working environments.



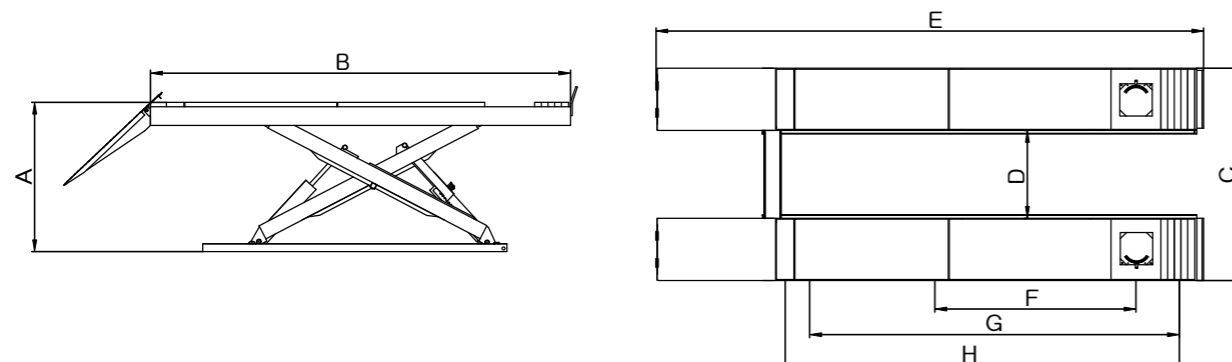
◀ Optional extension Kits to extend the platform 300mm
part No.PX003



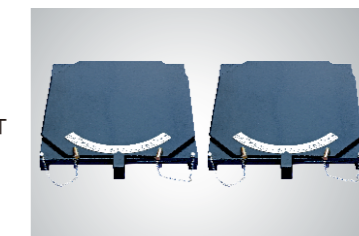
◀ Optional airline kits. Easy and convenient installation with all models of rolling jacks with a pneumatic pump
Kits No.:PX004

FEATURES

- 2-dual synchronous cylinders are applied to assure the lifting level on both platforms.
- Electro-air control system, safety self-lock mechanism.
- Skid proof diamond runway.
- Integrated rear slip-plates.
- Heavy duty design, the X serial scissors lifts use large steel tube to make it strong and assure the runways remain level during working.



◀ Optional rolling Jacks
J6H: manual hydraulic type 2.8 T
J6A: pneumatic hydraulic type 2.8 T
RJ-8A: pneumatic hydraulic type 3.5 T



◀ Optional Templates
kits No. :40101

SPECIFICATIONS

Model	Lifting Capacity	Lifting Time	A		B	C	D	E	F	G	H	Gross Weight	Motor Power
			Max. Lifting Height	Minimum Height	Runway Length	Overall Width	Width Between Runways	Overall Length (Inc.Ramps)	Min. Four Wheel Align	Max. Four Wheel Align	Max. Two Wheel Align		
PX16A	7.3T (16,000lbs)	110S	1870mm (73 5/8")	330mm (13")	5428mm (213 3/4")	2390mm (94 1/8")	1140mm (44 7/8")	6964mm (274 1/8")	2490mm (98")	4680mm (184 1/2")	4840mm (190 1/2")	2878kg (6,345lbs)	4.0HP