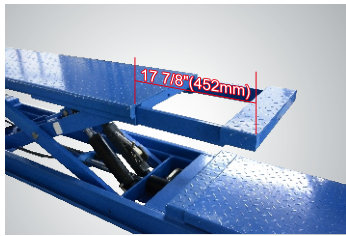
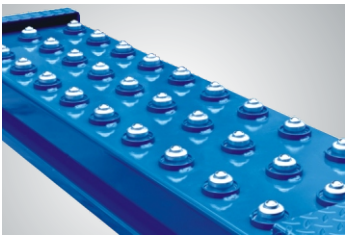


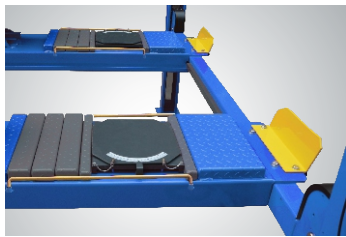
Perfect and flexible for reliable repairs,  
tire services, and wheel alignment application.



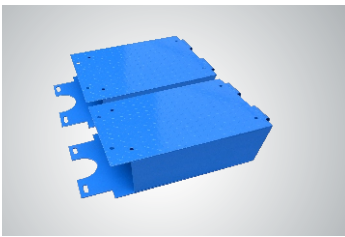
◀ Extendable platform suitable for various wheel bases vehicles.



◀ New rear-slip ball sets.



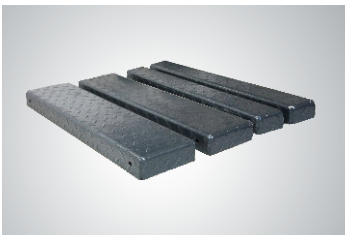
◀ Adjustable turnplate blocks to fit various wheel bases vehicles.



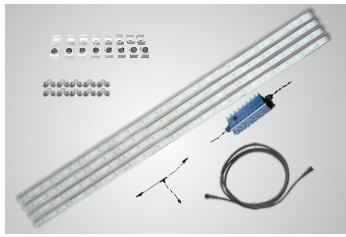
◀ Optional platform extension kits adds an extra 610mm length to the platform.  
Kits.:40903



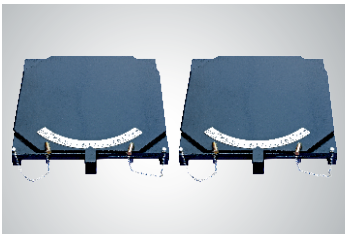
◀ Optional airline kits. Easy to install with all models of rolling jacks with pneumatic pump accessories.  
Kits No.:40102



◀ Optional adjustable blocks for alignment 4 post lift .  
Kits No.: 40905  
(used with Kits 40903)



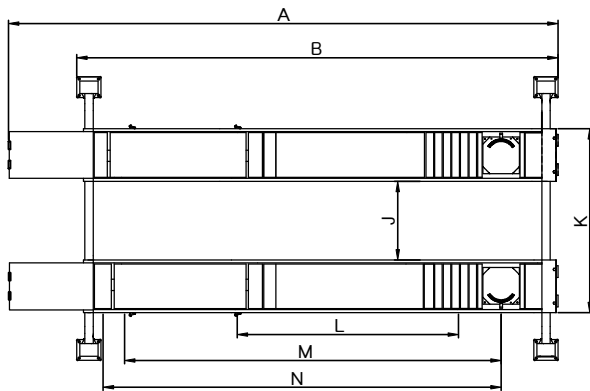
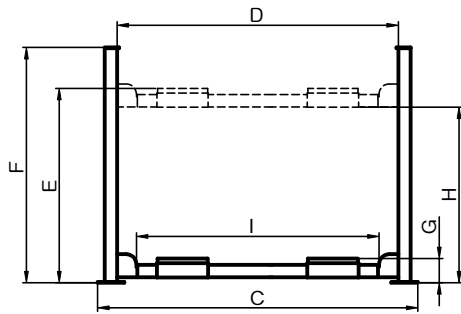
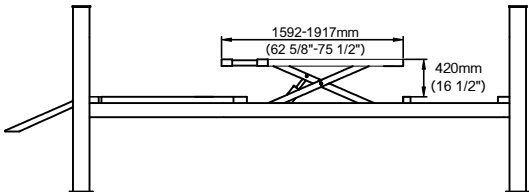
◀ Optional LED lighting: 24V LED light.  
Kits No.:40104



◀ Optional Turnplates .  
kits No. :40101

## FEATURES

- 4500kg (10,000lbs) lifting capacity, 4-post with sub scissors lift.
- Mechanical self-locking system and air-driven safety release.
- Dual safety mechanism provides additional safety.
- Adjustable turnplate blocks to fit different wheelbases.
- Skid proof diamond platform to avoid skidding.
- Aero cable is used for synchronization.
- Strict quality control of hydraulic cylinders with flow restrictor for a stable and smooth speed.
- Photo cell device to protect the two platforms in synchronization.



## SPECIFICATIONS

Model	Lifting Capacity	Scissors Lifting Capacity	Lifting Time	A	B	C	D	E	F	G	H	I	J	K	L	M	N	Gross Weight	Motor Power
410AWX	4.5T (10,000lbs)	3.5T (8,000lbs)	46S	5910mm (232 5/8")	4998mm (196 3/4")	3356mm (132 1/8")	3000mm (118 1/8")	1915mm (75 3/8")	2185mm (86")	220mm (8 5/8")	1725mm (67 7/8")	2646mm (104 1/8")	1063mm (41 7/8")	2153mm (87 3/4")	2080mm (81 7/8")	3905mm (153 3/4")	4050mm (159 1/2")	1728kg (3,810lbs)	3.0HP