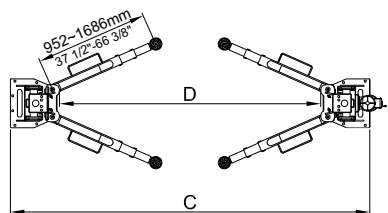
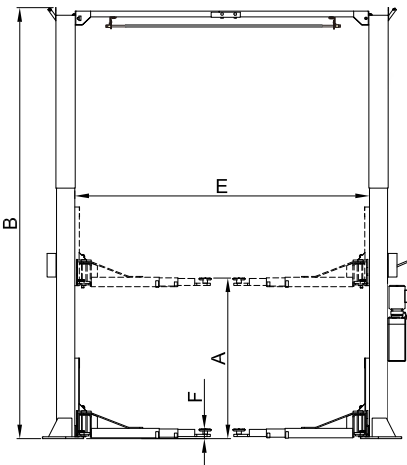




FEATURES

- 5500kg (12,000 Lbs) Capacity.
- Dual hydraulic direct-driven cylinders, designed and made on high standard, high quality oil seals for cylinder.
- Aero cable used for synchronization.
- 4 three-stage arms are suitable for more vehicles.
- Self-lubricating UHMW Polyethylene sliders and bronze bush.
- Single-point safety release.
- Clearfloor design, provide unobstructed floor space.
- Overhead safety shut-off device.
- Adjustable height setting accommodate varying service ceiling heights.
- Automatic arms restraints.



HEAVY-DUTY LINE OF TWO POST LIFTS

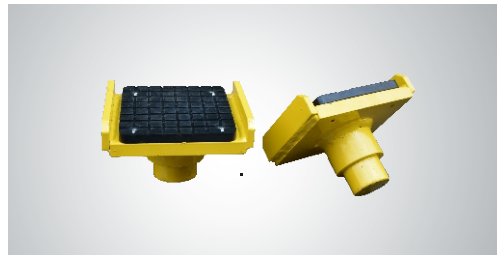
Peak heavy-duty line of two post lifts model 212C are specially designed for vehicle from car to truck, with heavy-duty steel construction.



- ▲ Single-point Safety Release
The release lever (next to the power unit) is pulled down to release the locks on both columns from one column. It is more efficient, more reliable, and safer than the dual safety release



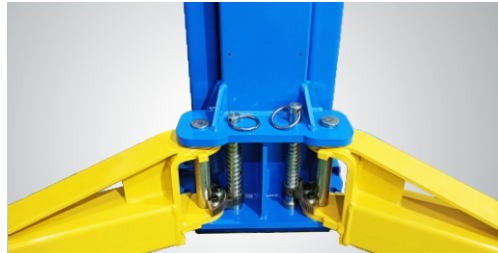
- ▲ The stackable rubber pads assembly with 1.5", 2.5", 5" extension adapters.



- ▲ The Optional Saddle adapter.
Kits No. for light truck:20802
Kits No. for heavy-duty truck:21103



- ▲ **EXCLUSIVE FEATURE !**
The 212C with 4 three-stages arms are allow to load more heavy-duty vehicles.



- ▲ Automatic arm restraints.



- ▲ Optional 24V LED lights for clear floor 2-post lift
Kits 20101 plus extension cable 20103.

SPECIFICATIONS

Model	Style	Lifting Capacity	Lifting Time	A	B	C	D	E	F	Gross Weight	Motor
				Lifting Height	Overall Height	Overall Width	Drive-Thru Clearance	Width Between Columns	Minimum Pad Height		
212C	Clearfloor Direct-driven	5.5 T (12,000 lbs.)	69 Seconds	1842-2071mm (72 1/2" - 81 1/2")	4420/4725/5030mm (174"/ 186"/198")	3829mm (150 3/4")	2787mm (109 3/4")	3137mm (123 1/2")	115mm (4 1/2")	1051kg (2,317lbs)	4.0 HP