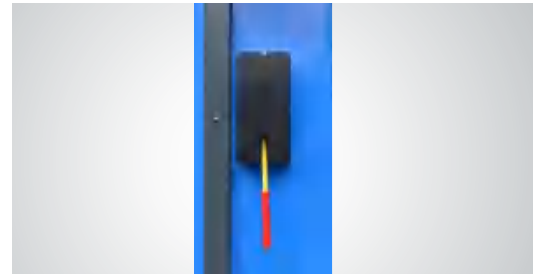




▲ Dual-lock safety mechanism and chain-protective cover, only available at PEAK.



▲ Durable manual lock release provides convenient operation.



▲ 24V safe operating control system.



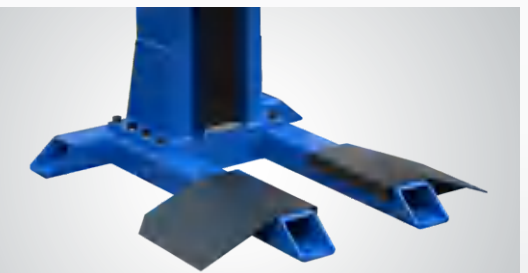
▲ PEAK exclusive auto-engaged arm lock and integrated single-handle lock release device.



▲ The safety stop device at the height of 300mm with tone alarm for safety.



▲ Sturdy arm comes standard with both screw and insert rubber pad and 3" extension adapter.



▲ Low profile space-saving ramps are easy to install, easy to drive in. only available at SL-3000.



▲ Portable wheels make it easy to move the lift. only available at SML-3000.

PEAK
World-class lifts

PEAK's single post lift series has been enhanced with a more robust structure, offering a large capacity of 3000KG. Available in fixed mounted and portable designs, they are ideal options for quick lifting a vehicle in commercial service shops, home garages, or areas with limited space. Both incorporate PEAK's exclusive auto-engaged arm lock and integrated single-handle arm lock release device.



MANUAL RELEASE SINGLE POST LIFT



No.3 Luomu Road, Muyuan, Shishan Town, Nanhai
District, Foshan (528225), China
Tel:86-757-81102815 Fax:86-757-81102809

PEAK CORPORATION
<http://www.peaklift.cn>



PEAK's newly designed single post lift is the perfect choice for quickly lifting a vehicle. It can be used in commercial service shops, home garage, or areas where it will take up less



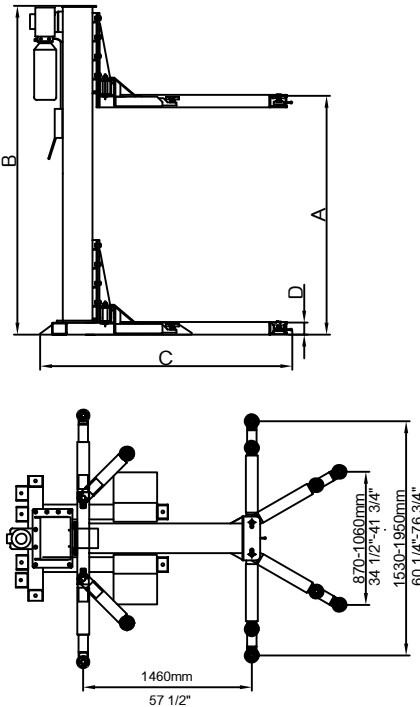
PEAK portable single post lift rolls smoothly across any flat surface and can be used indoors or outdoors. It's the perfect choice for any commercial service shop that needs to utilize less space.

MODEL SL-3000

SINGLE POST LIFT

FEATURES

- Lifting capacity: 3000KG
- Compact design with minimum footprint.
- Dual-lock safety mechanism, only available at Peak.
- PEAK exclusive auto-engaged arm lock and integrated single-handle lock release device.
- Hydraulic cylinder is designed and made on high standards, with utilizing imported oil.
- Flexible and adjustable lifting arms to fit more vehicles.
- Both screw and insert rubber pads with 3" extension adapters.
- Self-lubricating UHMW Polyethylene sliders and a self-lubricating bronze bush.
- Comes standard with fabric curtain cover.



SPECIFICATIONS

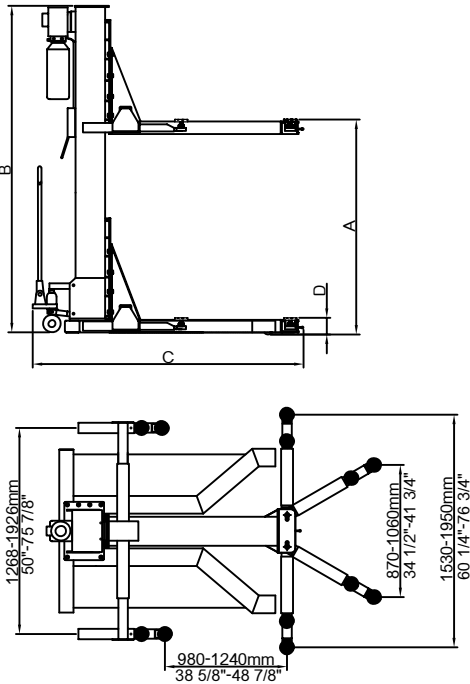
Model	Lifting Capacity	Lifting Time	A	B	C	D	Motor	Gross Weight
			Lifting Height	Overall Height	Overall Width	Minimum pad Height		
SL-3000	3.0T (6,600lbs)	32 Seconds	1825~1971mm (71 7/8"~77 5/8")	2766mm (108 7/8")	2146mm (84 1/2")	110mm (4 3/8")	3.0HP	679kg (1,497lbs)

MODEL SML-3000

PORTABLE SINGLE POST LIFT

FEATURES

- Portable design with lifting capacity: 3000KG
- Compact design with minimum footprint.
- Dual-lock safety mechanism, only available at Peak.
- PEAK exclusive auto-engaged arm lock and integrated single-handle lock release device.
- Hydraulic cylinder is designed and made on high standards, with utilizing imported oil.
- Flexible and adjustable lifting arms to fit more vehicles.
- Both screw and insert rubber pads with 3" extension adapters.
- Self-lubricating UHMW Polyethylene sliders and a self-lubricating bronze bush.
- Comes standard with fabric curtain cover.



SPECIFICATIONS

Model	Lifting Capacity	Lifting Time	A	B	C	D	Motor	Gross Weight
			Lifting Height	Overall Height	Overall Width	Minimum pad Height		
SML-3000	3.0T (6,600lbs)	32 Seconds	1825~1971mm (71 7/8"~77 5/8")	2766mm (108 7/8")	2295mm (90 3/8")	110mm (4 3/8")	3.0HP	854kg (1,883lbs)