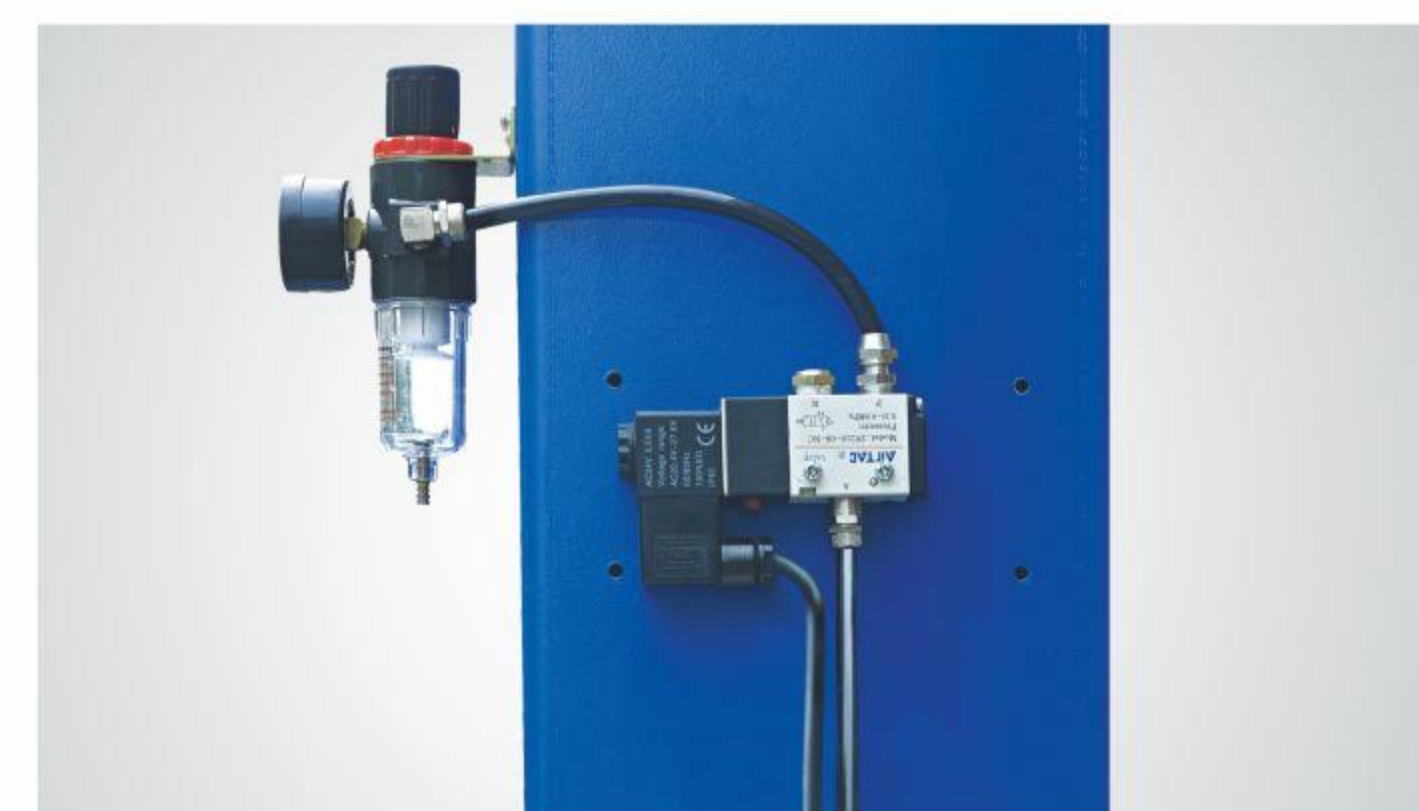
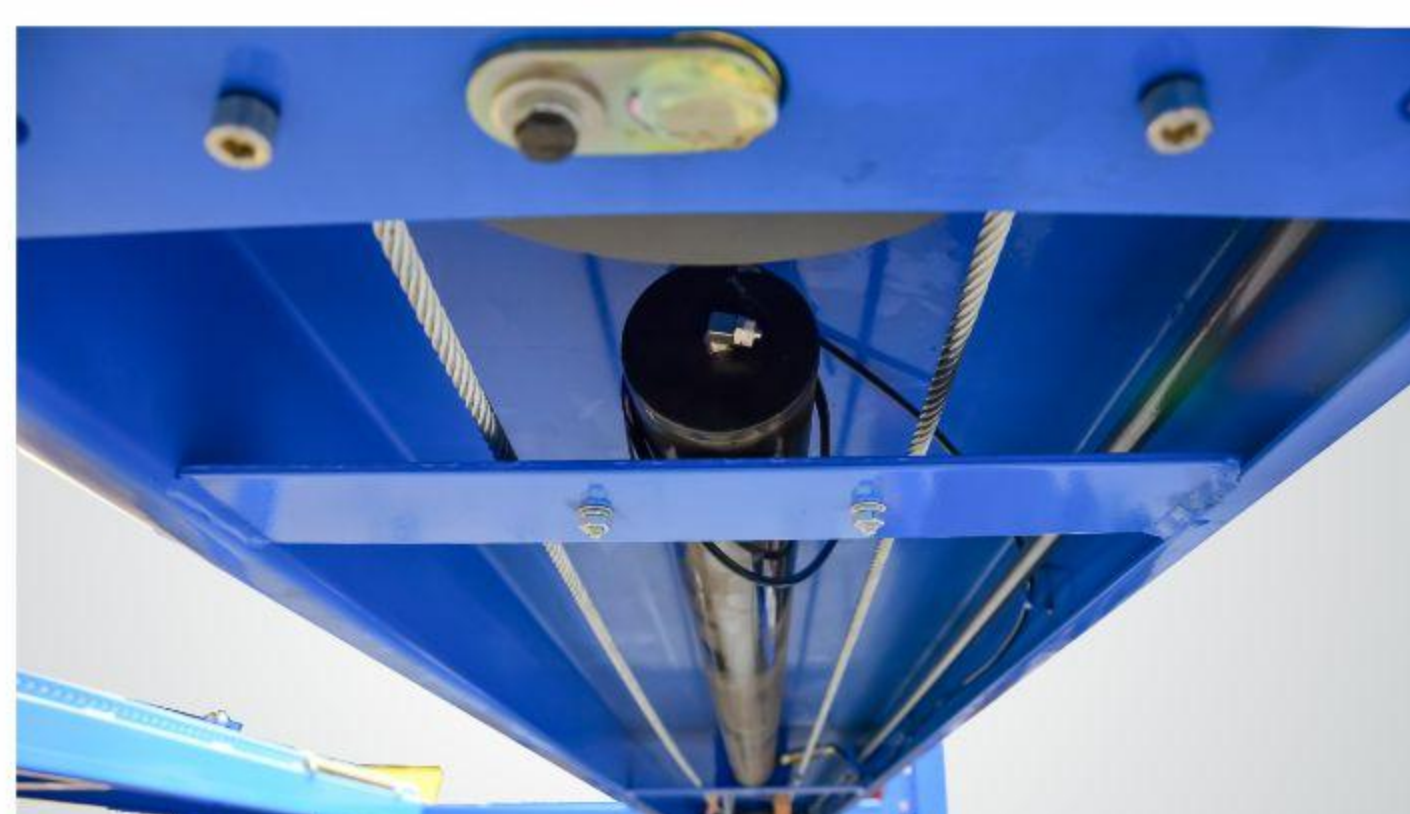




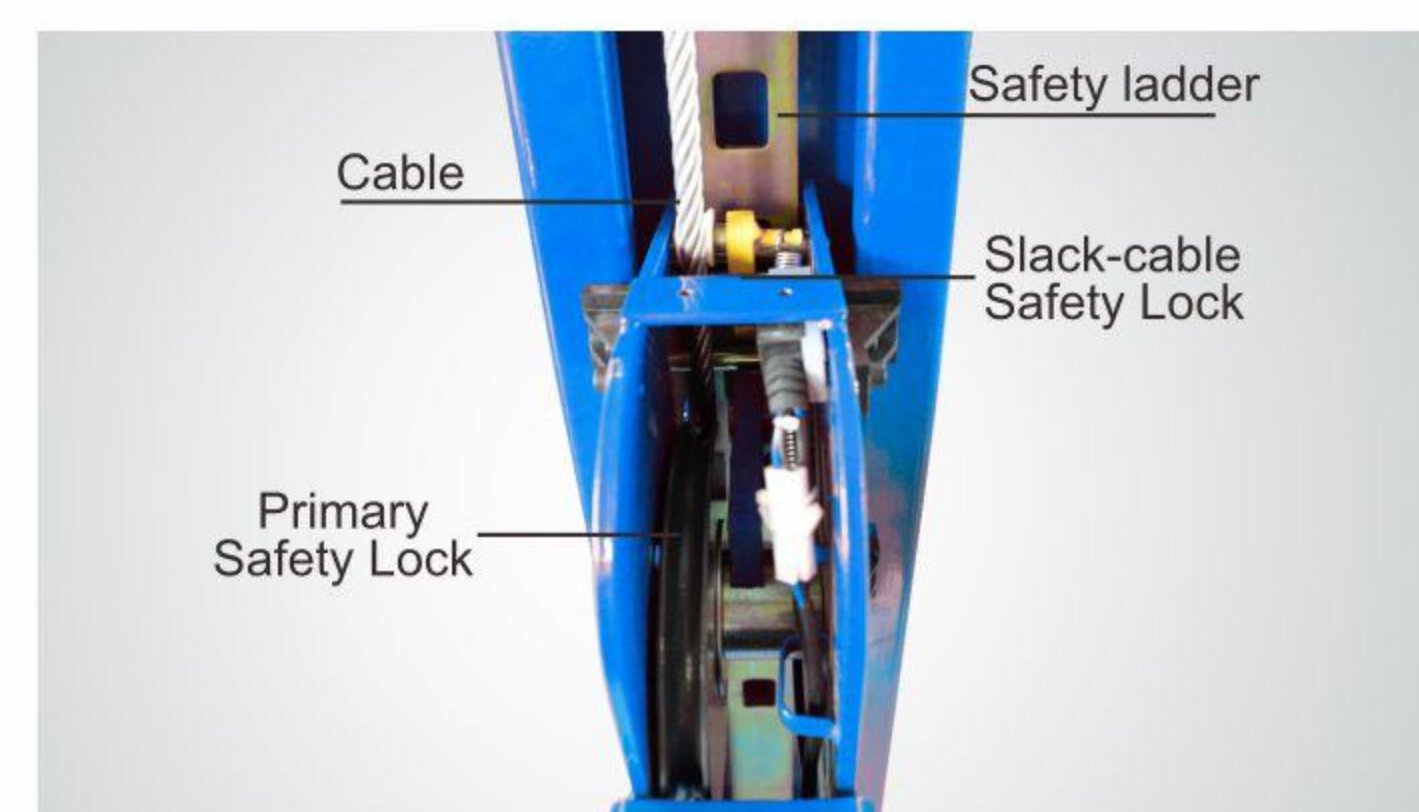
▲ Electric control device with UP, LOCK and DOWN buttons.



▲ Oil-water separator and solenoid air valve are installed on the power side column.



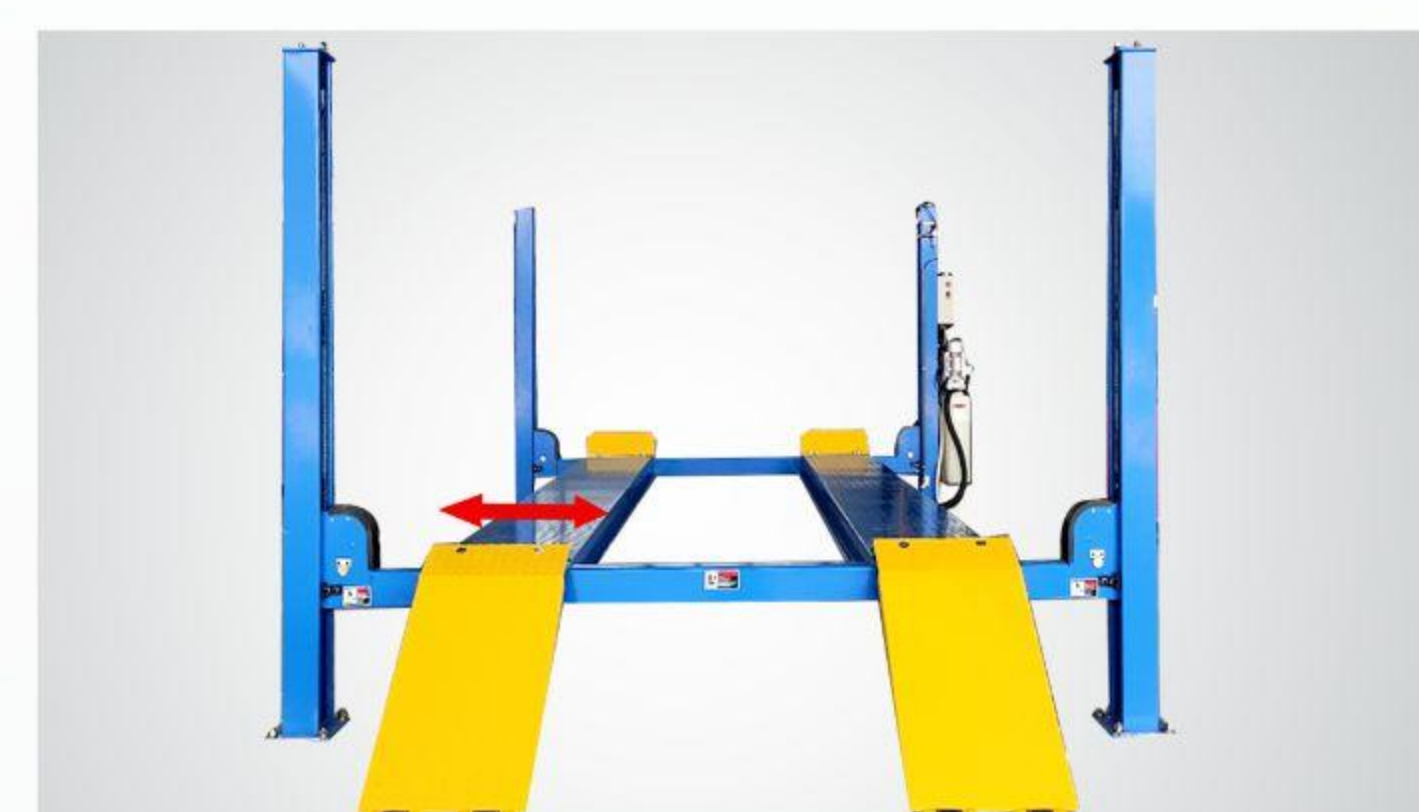
▲ High quality hydraulic cylinder utilizes imported oil seals.



▲ Double safety locks provide additional safety.



▲ Non-slip diamond platforms come as standard.



▲ Stepless adjustable width between platforms.



▲ Optional Turnplate. Each alignment lift need two units. Kits No.40101 Only available on 414A\414AE



▲ Optional Rolling Jacks RJ-8A: pneumatic hydraulic type 3,500Kg

ELECTRIC CONTROL FOUR POST LIFT 414 414E MODEL 414A 414AE

PEAK
World-class lifts



The 414 Heavy Duty Series, with a robust load capacity of 6,500 KG, is tailored to meet the professional needs with uncompromising strength and reliability. They are the preferred options for technicians working on trucks, SUVs, and other heavy-duty vehicles, whether for routine maintenance or complex alignment tasks, providing a solid foundation for maximum efficiency and performance.



PEAK CORPORATION
<http://www.peaklift.cn>



No.3 Luomu Road, Muyuan, Shishan Town, Nanhai District, Foshan (528225), China
Tel:86-757-81102815 Fax:86-757-81102809



GENERAL SERVICE FOUR POST LIFT



ALIGNMENT FOUR POST LIFT

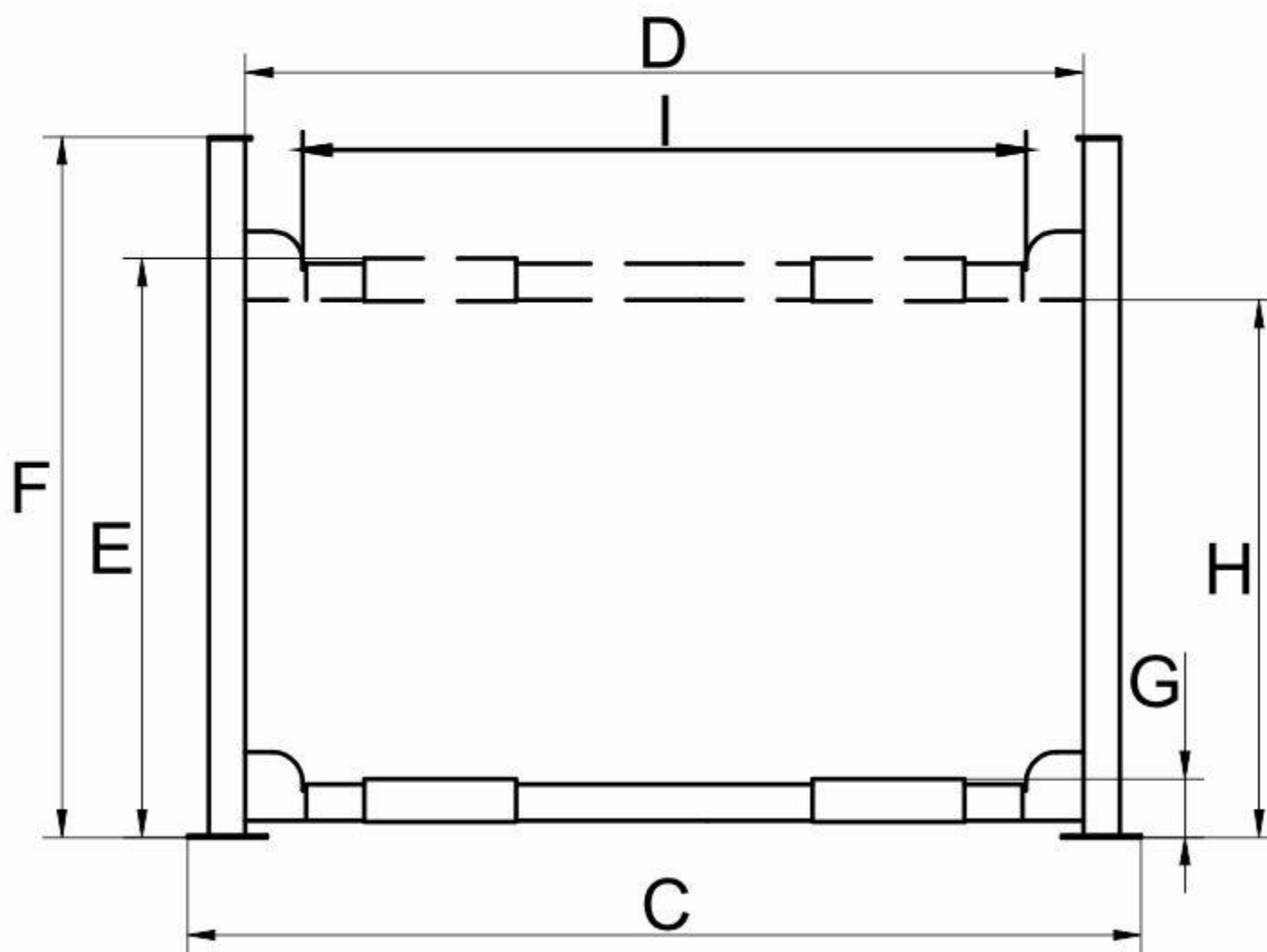
MODEL 414 414E

FEATURES

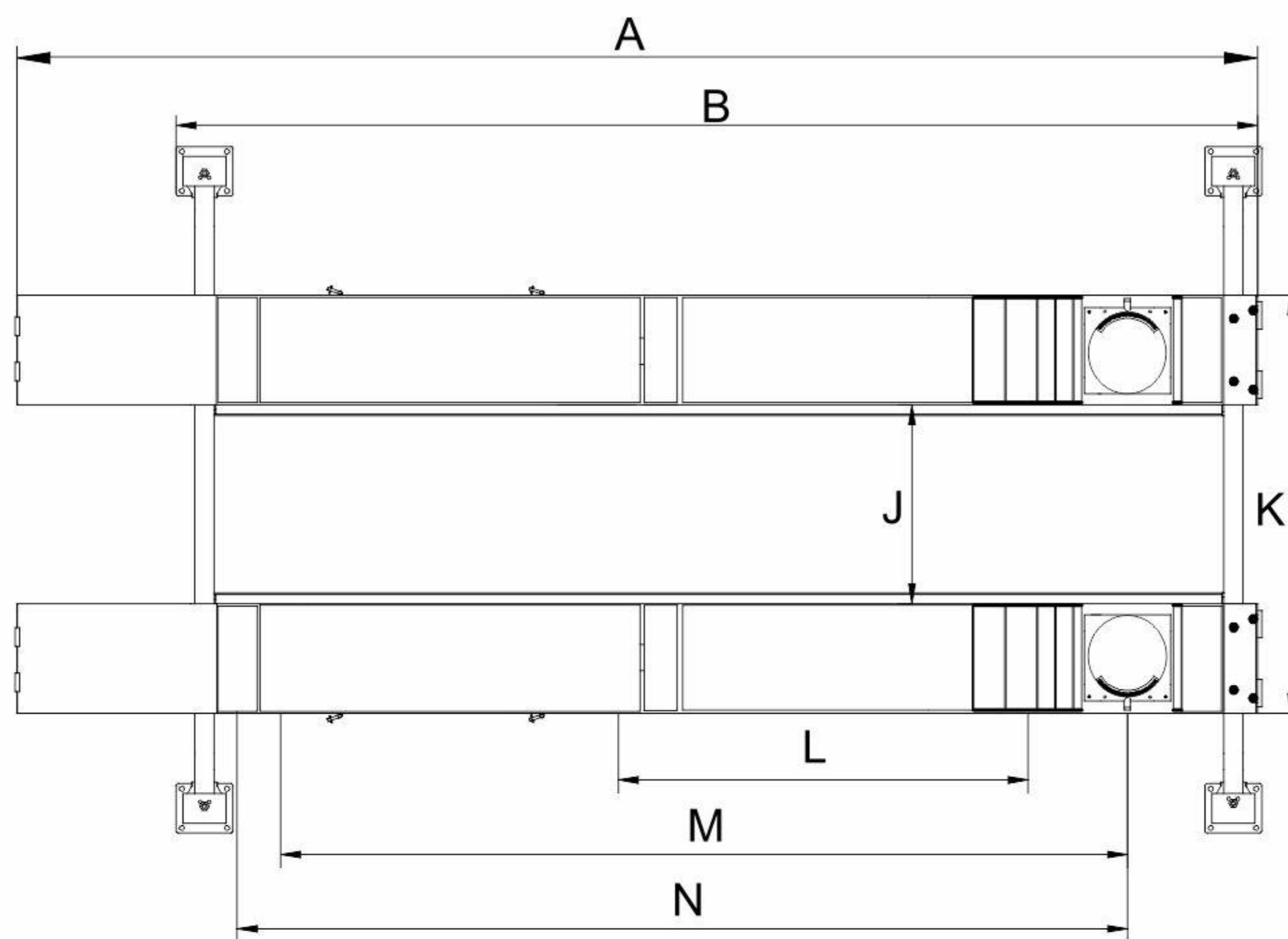
- 24V electrical control operation system.
- High quality hydraulic cylinder design and manufactured at high standard.
- Mechanical self-locking and air-release safety lock system.
- Dual safety devices mechanism: both primary safety locks and cable-slack protection system.
- Non-skid diamond platforms.
- Stepless adjustable width between platforms.



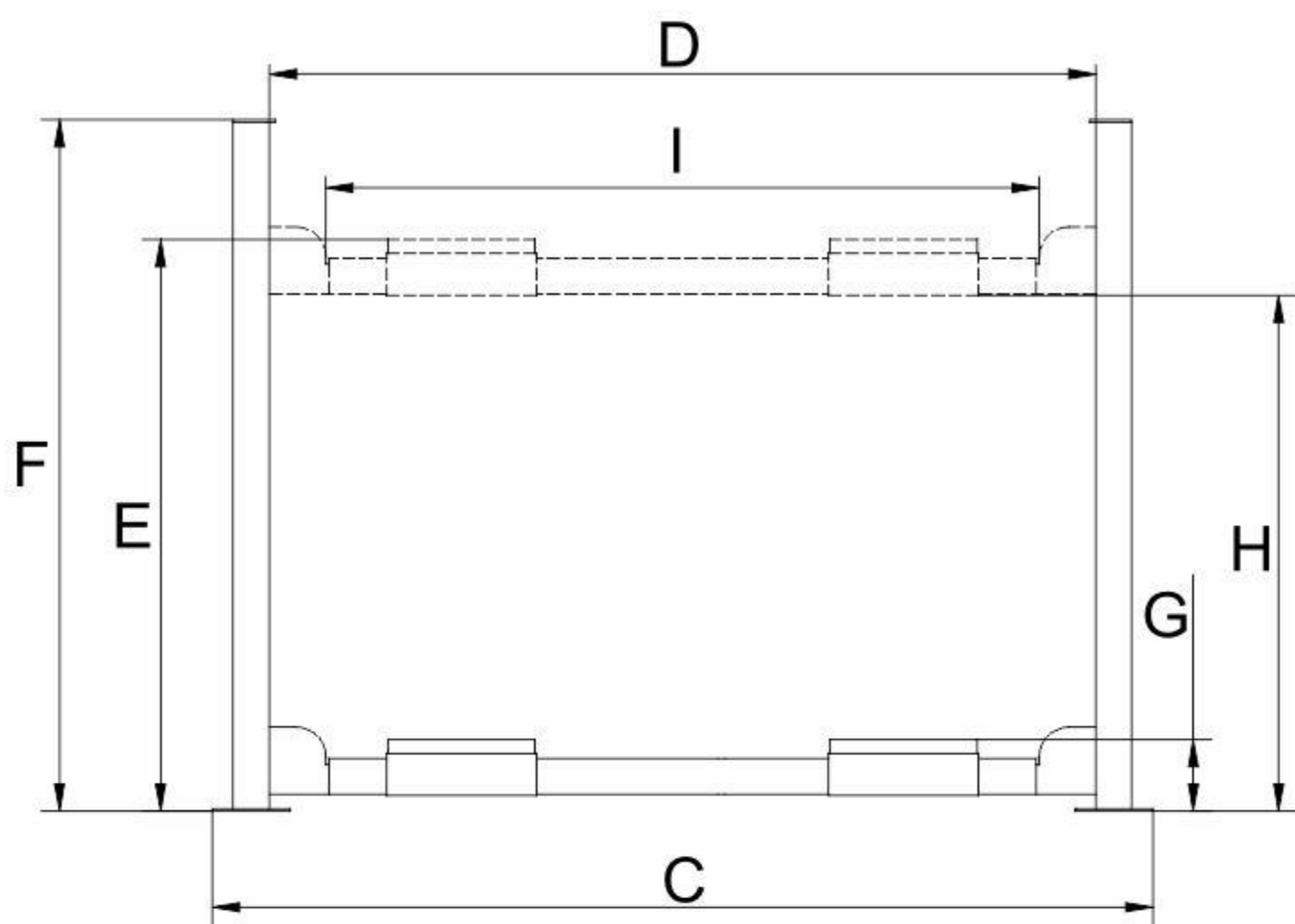
414 414E



MODEL 414A 414AE



414A 414AE



SPECIFICATIONS

Model	Lifting Capacity	Lifting Time	A	B	C	D	E		F	G	H		I	J	K	L	M	N	Gross Weight	Motor Power
			Overall Length (Inc Ramps)	Outside edge of crossbeams	Overall Width	Width Between Posts	Max. Lifting Height	Max. Lock Height to top of runway	Overall Height	Minmum Height	Max. Undereath Height	Max. Lock Undereath runway	Drive-Thru Clearance	Width Between Runways	Outside Edge of Runways	Min. Four Wheel Align	Max. Four Wheel Align	Max. Two Wheel Align		
414	6.5T (14,000lbs)	79S	6541mm (257 1/2")	5500mm (216 1/2")	3324mm (130 7/8")	2946mm (116")	1900mm (74 3/4")	1830mm (72")	2189mm (86 1/4")	200mm (6 5/8")	1730mm (68 1/8")	1660mm (65 3/8")	2592mm (98 3/8")	1194mm(47") Min.85mm(3 3/8")~ Max.1385mm(54 1/2")	2210mm (87") Min.1101mm(43 3/8")~ Max.2401mm (94 1/2")	/	/	/	1272KG (2,804lbs)	3.0HP
414A	6.5T (14,000lbs)	79S	6528mm (257")	5500mm (216 1/2")	3324mm (130 7/8")	2946mm (116")	1950mm (76 3/4")	1880mm (74")	2189mm (86 1/4")	250mm (9 7/8")	1730mm (68 1/8")	1660mm (65 3/8")	2592mm (98 3/8")	1194mm(47") Min.85mm(3 3/8")~ Max.1385mm(54 1/2")	2210mm (87") Min.1101mm(43 3/8")~ Max.2401mm (94 1/2")	2396mm (94 5/16")	4310mm (169 11/16")	4472mm (176")	1544KG (3,404lbs)	3.0HP
414E	6.5T (14,000lbs)	81S	7265mm (286")	6224mm (245")	3324mm (130 7/8")	2946mm (116")	1900mm (74 3/4")	1830mm (72")	2189mm (86 1/4")	200mm (6 5/8")	1730mm (68 1/8")	1660mm (65 3/8")	2592mm (98 3/8")	1194mm(47") Min.85mm(3 3/8")~ Max.1385mm(54 1/2")	2210mm (87") Min.1101mm(43 3/8")~ Max.2401mm (94 1/2")	/	/	/	1413KG (3,115lbs)	3.0HP
414AE	6.5T (14,000lbs)	81S	7252mm (285 1/2")	6224mm (245")	3324mm (130 7/8")	2946mm (116")	1950mm (76 3/4")	1880mm (74")	2189mm (86 1/4")	250mm (9 7/8")	1730mm (68 1/8")	1660mm (65 3/8")	2592mm (98 3/8")	1194mm(47") Min.85mm(3 3/8")~ Max.1385mm(54 1/2")	2210mm (87") Min.1101mm(43 3/8")~ Max.2401mm (94 1/2")	2396mm (94 5/16")	4310mm (169 11/16")	5190mm (204 5/16")	1634KG (3,602lbs)	3.0HP

The images, technical specifications, and descriptions shown here are subject to change without prior notice. Please contact us for the latest information if necessary.